

JTB SUNRISE TOURS DESK KYOTO

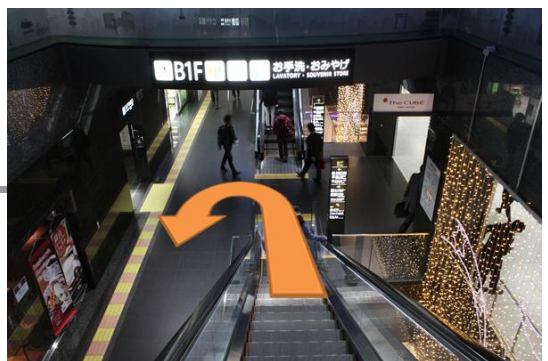
31 Hiagashikujo-nishisanno-cho Kyoto-shi Kyoto, JAPAN, 601-8003

〒601-8003 京都府京都市南区 東九条西山王町31番地 京都アバンティ B1F

075-341-1413

JTB Sunrise tour desk Kyoto is B1 floor at Avanti Shopping mall.
Please come to Avanti Shopping mall or Hotel Keihan Kyoto.

📍 JR Central Exit

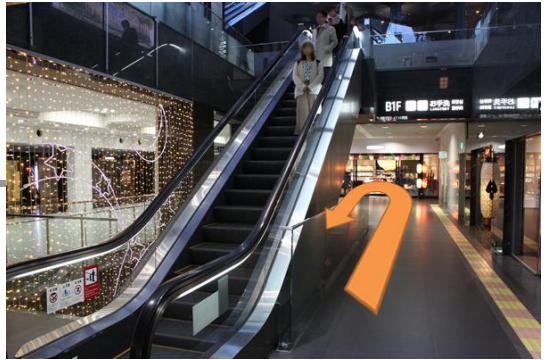


1 After the gate, turn right.

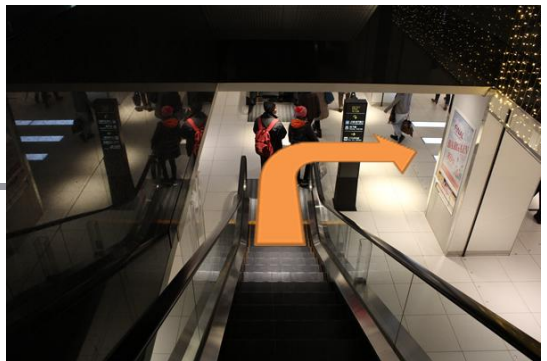
2 Get down the escalator for underground.

3 Turn left and go to the escalator for B2 floor.

4 Get down the escalator for B2 floor.



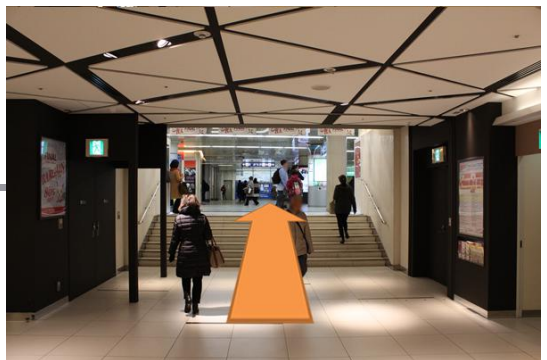
5 Turn right.



6 Turn right before shopping building and go straight.



7 Get up the steps.



8 When you see the green ticket machine on your right front, turn right.



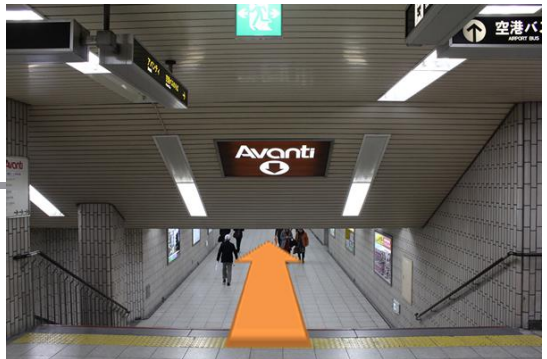
9 Go straight.



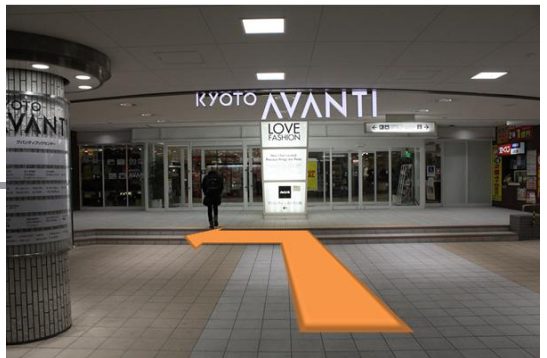
10 On the way, there is the gate of Subway South Exit on your right side.
Go straight to slope side with Avanti sign.



11 Get down the steps and go straight.



12 You will find the entrance of Avanti, then turn left.



13 You will see our Sunrise tour desk on your left side.

